

Hale Parish Plan 2020



INTRODUCTION

Hello and welcome to the Hale Village Parish Plan of 2020. If you are a longstanding villager, thank you for reading this; if you are a new resident, then welcome to Hale!

This village has an unrivalled setting on the edge of the New Forest, surrounded by the beauties of nature alongside peace, quiet and relative separation from the bustle of the world around us.

The village has grown up around Hale Park, the Church and Hatchet Green over the centuries to form a village of 262 residential properties plus Hale Primary School, Hale Village Hall and St Mary's Church. The village has developed a varied mixture of architectural styles over the years.

Examples of styles include 16th Century properties such as those around Hatchet Green and on Queen Street and 20th Century groupings including three Closes (Hatchet, Carters and Dodgson), one row of terraced houses (Tethering Drove) and the Woodfalls Cross end of Hale Road that has numerous newer properties on both sides of the road.

Over 70% of village properties have three or more bedrooms and nearly a third of properties have four or more bedrooms, most of which are detached with surrounding land.

Although our village does not have a specific architectural character it is significantly defined by the thirty-one listed structures, the location and the surrounding forest.

Hale village has the good fortune to have the well-used and popular facilities of the school, the village hall, St. Mary's church and the wonderful village green. There are just under 270 households and a number of small businesses with a population of just under 500.

Hale Primary School is a well-established and popular school which has an Ofsted rating of "Good" (2018) and caters for children from Hale and the surrounding area. It is a vital part of our community and 19% of 86 pupils come from Hale (2018).

There are three Sites of Special Scientific Interest (SSSI) in or adjacent to the village; Hatchet Green, Hale Park Meadow and Hale Purlieu.

The managing of change in response to the world around us and the protection and preservation of village life is a delicate balance. We cannot remain insular and separate from the world around us but we can try to retain control of changes so they are in keeping with the village and our aims for the future.

VISION

Hale Parish Council's vision for the village is to balance the preservation of our history and the natural beauty of the environment, whilst carefully managing the inevitable change that the 21stC will bring, in a way that is beneficial and works for the whole community.

We aim to:

Maintain and protect our natural environment, flora and fauna, the SSSIs and RAMSAR sites

Encourage and support the practice of commoning

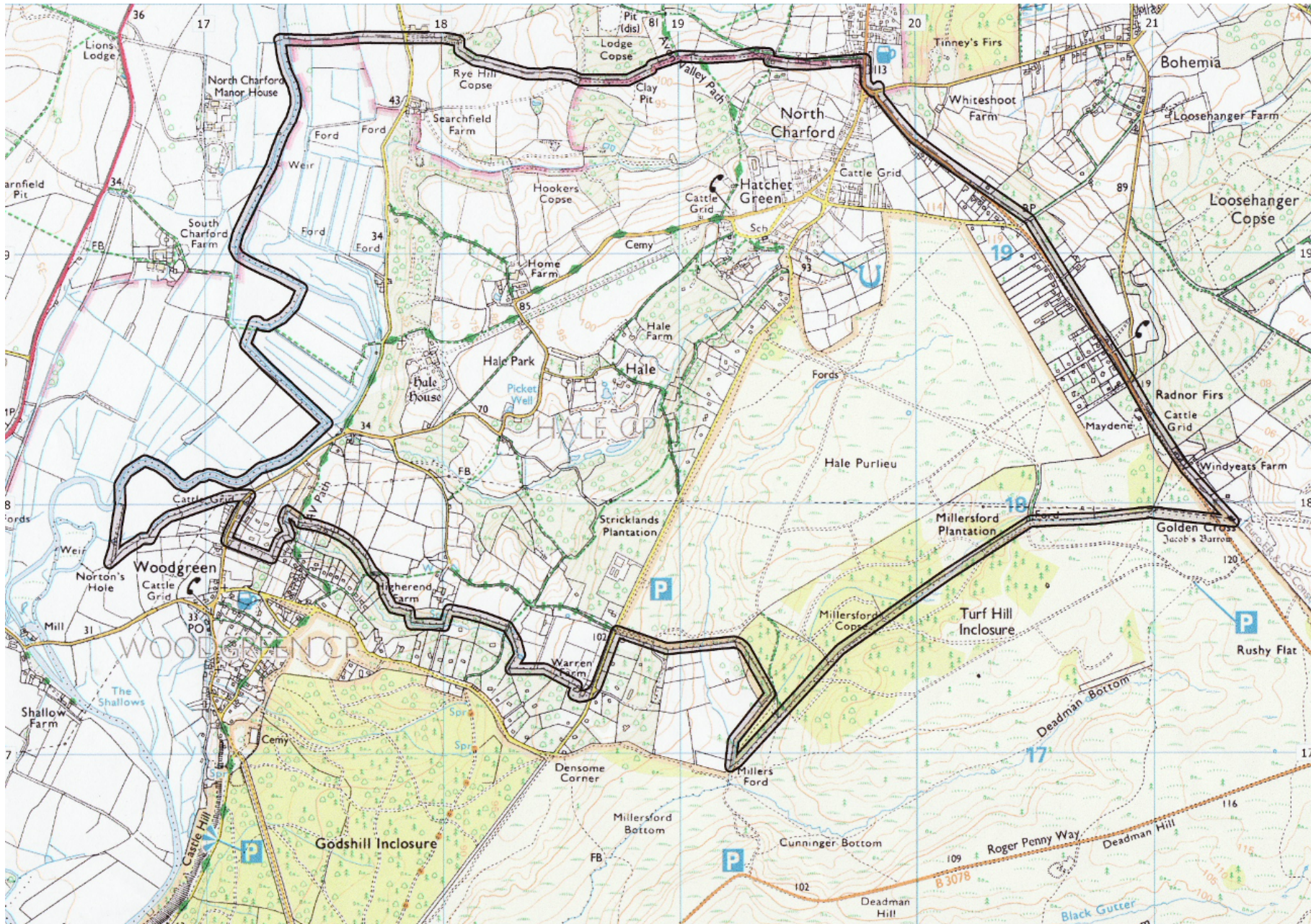
Preserve and maintain the unique character of our village; protect and enhance community assets

Facilitate, encourage and maintain the use of our church, school and village hall

Support a balanced demographic population

Build relationships and work with partners to achieve mutual goals

MAP OF HALE PARISH



Reproduced by permission of Ordnance Survey on behalf of HMSO. Crown Copy 2007. All rights reserved. Ordnance Survey Licence number 100047911

THE PARISH COUNCIL

Hale Parish Council (HPC) consists of six elected residents of Hale. To be eligible to be elected as Councillors they had to be registered electors of the Parish and, for the whole of the previous year have occupied land or other premises in Hale. An election is held every four years when all Councillors stand down and either retire or stand again for election for the next term. The most recent election was held in May 2019.

The Parish Council manages the Parish precept which is money allocated from the Council Tax paid to New Forest District Council by each household. The precept for 2019 was £12,177 which is £46.48 for a Band D property (£77 for a Band G property).

The precept is mainly used for:

Employing the Parish Clerk (a legal requirement for every Parish Council)

Maintaining the Cemetery

Maintaining the Village Hall Car Park

The remainder is used for maintaining other village assets such as trees, benches, the bus shelter and noticeboards and for

essential projects such as road safety measures. The Parish Council annually considers and issues small grants to organisations that provide services that support the villagers of Hale.

The Council holds meetings monthly throughout the year (except August) that are open to the public, whose participation is encouraged. The monthly agenda is published at least three working days in advance and displayed on village noticeboards and the parish council website www.haleparishcouncil.co.uk.

The Parish Council is a statutory consultee to the local planning process so that any planning submissions within the village are passed to the Parish Council for comment. Although the Council does not have the final word, our comments contribute local knowledge and opinion and are part of maintaining the character of the village.

For further information, rules covering the Council's operation, Councillor contact details and current information please refer to our website www.haleparishcouncil.co.uk or contact the Clerk on hpcclerk@gmail.com.

LOCAL COUNCIL QUALITY AWARDS

Uniquely in the history of Hale Parish Council, all six Councillors were elected in 2019 and the Clerk aims to achieve the Certificate in Local Council Administration (CiLCA). This will enable us to apply for the Local Council Quality Award in 2021.

In order to do this we have to meet certain standards that are detailed in our action plan on page 22.

One of our stated aims is to consult more with parishioners and we have recently undertaken consultation on affordable housing and potential sites and soon

we expect to consult on the adoption of the old telephone box by Hatchet Green. To view any open consultations and past results, please visit the Parish Council website. Please let us know your ideas for new consultations.



PARISH ACHIEVEMENTS SINCE 2018

Hatchet Green Regeneration

Clearly marked passing places on the north side of Hatchet Green have been created. The verge areas have been protected with newly installed dragon's teeth. Broken and damaged dragon's teeth around other parts of the village green have also been repaired or replaced.

The two seats on the south side of the village green have been replaced.

Maintenance of Village Assets

All village benches have been repaired and re-varnished. One on the Purlieu was replaced with a memorial bench with the special agreement of the National Trust. Two benches by Hatchet Green were replaced in 2020.

The old and leaking noticeboards at Woodfalls Cross have been replaced with a new one in the bus shelter and a new noticeboard has been purchased for the Cemetery.

Village Hall Car Park

In 2018 Hampshire Highways carried out longer term repairs to the edge of the road along the top of the car park. This included a community effort to carry out interim gravel repairs, including filling pot-holes and clearing drains followed by the installation of a concrete edge and new tarmac finish to the road.

In 2019 we installed a median drain and branches. It is expected that this will significantly improve water dispersal and thereby protect the integrity of the gravel surface. We were grateful for donations from local groups, our County Councillor and lottery funding for this essential work.

There are ongoing discussions with representatives of the School to look at ways of improving traffic and parking during School drop-off and pick-up times.



Hale Cemetery

The Parish Plan Survey, conducted in February 2017, reported overwhelming approval for the Parish Council to continue maintenance of the cemetery using parish funds. The Parish Council has nominated a lead Councillor to coordinate improvements and gathered a group of volunteers who meet and agree seasonal plans and routine maintenance. The central flower bed has been replanted with plants unattractive to deer and a wildflower area is underway. The paths have been renewed with new gravel and gravel-boards on a weed-proof membrane. New volunteers are welcome and we have received several generous donations towards this project. Thanks to all those who have made donation and to Cllr Mangan and the vounteer team for their hard work.

New Website

www.haleparishcouncil.co.uk

We are extremely grateful to David Keniston for donating his time and expertise to develop and help our Parish Clerk to manage the new website that has been invaluable during the Covid-19 epidemic, enabling communication with villagers via the blog and email registration system. David also designed our branding and the new logo on the left.

VILLAGE COMMUNICATION

Hale Parish Council Website

Until recently HPC had a few dedicated pages on the New Forest District Council's website with limited capacity and flexibility of use. Our new website was launched in early 2020 with the option to sign up for email alerts when important information is posted on the site. This has proven invaluable in communication with villagers since the new website was set up. Please visit our website and sign up if you haven't already done so. Soon we plan to set up HPC designated emails for all Councillors. The possibility of a Parish Council Facebook page has been discussed and not taken up due to concerns regarding monitoring and management.

Village Hall Website

A useful calendar is on the website allowing users to see when the hall is free. Terms of hire can also be viewed together with hire fees and booking information. Hale Village Hall also uses a Facebook page to advertise events and fundraising activities. Tax effective donations to Hale Village Hall can be made using Gift Aid and forms are available in the entrance lobby. Those shopping online can do so via Give As You Live and make a donation to the hall every time you shop, at no cost to you. Go to www.giveasyoulive.com and search for Village Hall, Hale, Fordingbridge. David Keniston designed and manages the technical aspects of the website and Facebook page.

Hale & Woodgreen Parish Magazine

Our treasured magazine has been in production for over half a century and is edited, printed and delivered by dedicated volunteers. Hale and Woodgreen Parish Council publish their monthly minutes and any other important notices in the magazine which is delivered to most households in the two villages, monthly except for December. There are copies in the village hall going back to the 1960s. Our sincere thanks are extended to Ann, Mike and the team for their dedication and willingness to help.

Next Door Woodgreen

A popular, local, social networking site that links Woodgreen and surrounding villages for items lost and found, for sale, advertising events and services and sharing general questions and concerns. The Parish Clerk posts notices on Next Door Woodgreen when we need to communicate a message quickly and to a wider audience. Anyone can join to keep in touch with neighbours and learn about what is going on locally.

Village Noticeboards

Parish Council locking noticeboards are located on the north side of Hatchet Green and in the bus shelter at Woodfalls Cross. Agendas for meetings and important notices are displayed here. There is also a notice board in the cemetery and the village hall has several noticeboards, inside and out.



ST MARY'S CHURCH, HALE

St Mary's Church, Hale painted in 1951

St Mary's Church is a vital and vibrant part of our village life. It is part of a wider group of seven churches forming a church community that covers a spread of town and country areas providing pastoral and support network services to all and especially to those in need.

The Avon Valley Benefice is:

St Mary's Church, Fordingbridge. Church Street, Fordingbridge, SP6 1BB

Sandleheath Uniting Church. Alderholt Road, Fordingbridge, SP6 1PT

St Giles Church, Godshill. Southampton Road, Fordingbridge, SP6 2LE

Church of the Holy Ascension, Church Lane, Hyde, SP6 2QJ

St Mary's Church, Breamore. Nr Fordingbridge Hampshire SP6 2DF

St Mary's Church, Hale. Hale Park, Hale Lane, Hale, SP6 2RF

St Boniface Church, Woodgreen. Hale Road, Woodgreen, SP6 2AJ

St. Mary's is the oldest institution in Hale and is an important community hub and the centre of spiritual guidance; not to mention baptisms, marriages and funerals. "A place of worship" was built on this spot by Adam de la Forde in the early C14th and was largely private to Hale Park Estate until the 1600s when it was re-built by the Penruddock family under the architectural guidance of Inigo Jones.

Thomas Archer added the transepts in about 1715 and at the very end of the 19th century the roof was replaced. Other works included moving the belfry, fitting under-floor heating, building a vestry and fitting a new wooden block floor in the nave.



Underpinning of the South transept wall around Thomas Archer's memorial was carried out in 2005 and decorative repair of the wall plaster on the upper part of the south wall of the nave after the underpinning revealed significant areas of old wall paintings and text. Expert inspection indicates that these were probably painted during the early 1600s and may have been painted over by the Puritans in the 1680s.

Other improvements to the facilities of the church were made during the above repair works, which included the installation of a sound and loop system and improved access, toilets and limited kitchen facilities.

Further information can be found on their website at <http://www.avp-benefice.org.uk/>. Or call the church office on 01425 653163 or email church.office@fordingbridge.com.

VOLUNTEERING

There are many opportunities for volunteering in Hale and surrounding areas. The church, the school, the village hall and the cricket club all have a constant requirement for help, as do the Parish Council and Downton Link.

If you are interested in volunteering in Hale please contact Hale Parish Clerk hpcclerk@gmail.com

HALE CEMETERY

There is broad support for the Parish Council to continue maintaining and improving the cemetery. Recent improvements in 2019 have included re-gravelling the pathways, planting deer proof shrubs in the central flower bed and a new noticeboard. Much of this work has been initiated and completed by volunteers in the parish and funded by generous donations for which we are very grateful. The next plan is to find a way to keep the deer out, if possible, probably by erecting deer fencing around part of the perimeter.



DOWNTON LINK

Many Hale residents benefit from the services provided by Downton Link, or volunteer for them. Downton Link is a provider of transport by volunteer drivers, using their own cars, for clients needing essential journeys such as GP, hospital or dental appointments, or wanting to go shopping or visit friends and family. Downton Link also offers a befriending service.

It is a charity and asks only for donations that clients can afford. Their contact number is 01725 513807 9am - 5pm Monday to Friday or leave a message on their answerphone email info@downtonlink.org.uk.

Volunteer drivers are always needed and are paid a mileage allowance.

HALE VILLAGE HALL

Construction was completed in 1932 and funded by village events, gifts from locals and a loan from the Carnegie Trust, in response to improving lifestyles and a new enthusiasm for social activities and entertainments at the start of the C20th. Intensive use of this facility quickly followed, and users currently include the primary school, a table tennis club, music, films, entertainment, food markets and coffee mornings; dances and dancing lessons, tai-chi, puppy training; and meetings of societies and by private individuals for social events.

Since it was built the village hall structure has been enormously repaired, extended and improved. In recent years, thanks to the efforts of volunteers, funds have been raised for building repairs; re-modelling the entrance hall; installing low energy lighting and a state-of-the-art fire alarm system; a new gas boiler; new toilet facilities; a fully professional kitchen; a high-speed wi-fi and projector system; and supporting a number of community and social events with a new sound system. The Trustees of the village hall have been well supported by funding from Hale Parish Council and other local groups such as Hale Social Committee and Hale and Redlynch Transition Group, as well as Councillor Heron, Hampshire County Council, New Forest District Council, The National Lottery, The Landfill Communities Fund, Garfield Weston Foundation and Bernard Sunley Foundation.

In 2019 Hale and Redlynch Transition Group and Hale Village Hall Committee installed a small recycling centre outside the village hall to the side of the bin area.

HALE VILLAGE ARCHIVES

Comprehensive archives going back many years are held in fireproof cabinets in the village hall. These include many historical, tapes, books, photograph albums and back copies of the Hale and Woodgreen Parish Magazine. It is intended to put these on public display annually from October 2020.

VILLAGE HALL CONTACTS

Marjaana Batterbury – hall bookings.
Telephone 01725 510050

Jacqui Hartas – Chair of the Village Hall
Committee 01725 510376



SOCIAL & OTHER EVENTS

A huge thank you to everybody who has volunteered and worked on the Social Committee, the Transition Group or the Village Hall Committee. It is thanks to the efforts of village volunteers who have organised many one-off events and continue to make weekly and other regular events happen. These include:

- weekly table tennis
- monthly film nights
- monthly coffee mornings
- monthly local produce market
- arts productions and entertainment
- talks and presentations

ACTIVITIES FOR YOUNG PEOPLE

Hale Brownies is well established and well attended on Thursday evenings and a good mix of age groups play table tennis on Wednesdays. After school table tennis also takes place using the hall equipment, purchased with help from Table Tennis England.

Hale Pre-School closed in 2018 and there only remains the weekly Mother and Toddler Group for young children in the village hall. We hope people will come forward to run more pre-school activities and a youth club with more activities for teenagers would be very welcome in the village. A cycling club has also been considered.

HALE PRIMARY SCHOOL

Hale Primary school is part of the Forest Edge Learning Federation with Breamore School formed in April 2016 and Hyde School joined the Federation in 2020. All three schools are thriving, and Hale School is a core part of the Hale community.

There has been a school in Hale since before 1815 although the site of the schoolhouse has moved several times. The current building was completed in 1872 to accommodate 82 pupils. The school was extended to its current size in 2008. This extension included three light and airy high-tech classrooms that open out onto a wooden deck covered with a full canopy to allow use whatever the weather.

The children are lucky enough to have an all-weather playground with play structures, raised beds for planting, an outside classroom and learning area plus the use of Hatchet Green when the weather permits. The children can use the green for sports as well as playtime and all love this extra space, especially having to share it with the ponies!

Residents of Hale who were pupils of Hale School remember fondly the happy school in wonderful surroundings and being able to play on the village green.

Today the school is rated good by Ofsted and the school staff are proud of their provision of a high quality, all round learning experience for

our children. As part of the Federation, Hale school provides not only an excellent education but also one that is broad and varied.

If you would like any further information on the History of Hale Primary School or current issues including admissions information please go to their website www.hale.hants.sch.uk

SCHOOL CONTACTS

Mrs. Emma Clark, Executive Head Teacher, Forest Edge Federation (Hale and Breamore Schools)

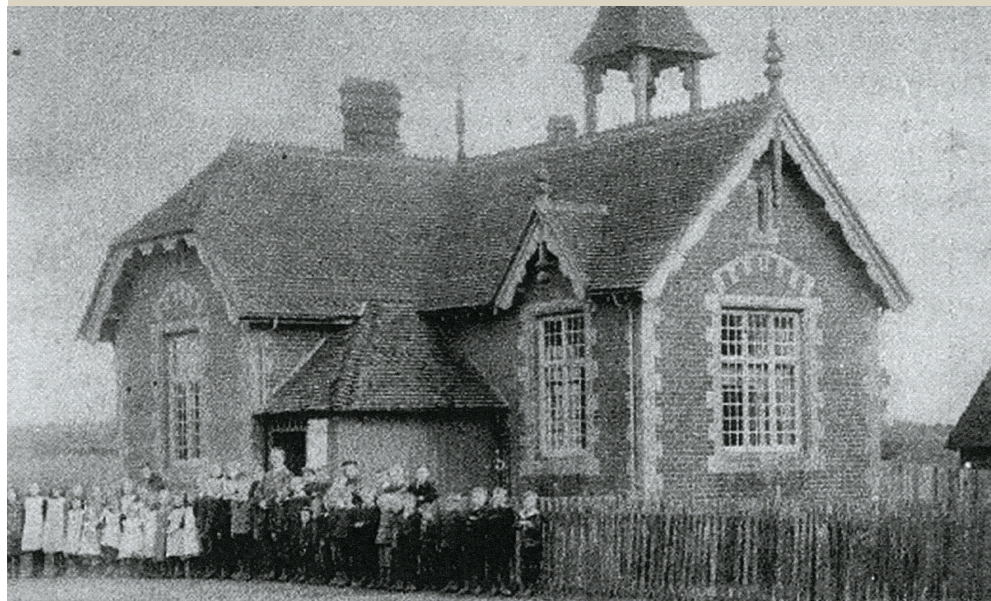
Office contacts:

The school office – Hale – 01725 510436

Mrs Judy Bennett – Breamore – 01725 512286



*HALE SCHOOL AS IT IS TODAY
WITH A LARGE
EXTENSION TO
THE SIDE*



*AND
AS IT
WAS
IN
1911*

“GOOD TO KNOW” Village Information

Neighbourhood Watch



Hale Neighbourhood Watch was reinstated in January 2008, with the support of Hampshire Constabulary. Despite the many changes in our local Police Officers and Safer Police Teams, we have managed to build and maintain a good working relationship with the police.

Our Neighbourhood Watch is widely used by residents and not just for crime related issues. You may have a general query or would like to give information about a suspicious person or vehicle – or you may simply need reassurance, help or advice on something.

Our Neighbourhood Watch has a supportive team of Hale sub-coordinators each of whom cover designated parts of the village. In 2016 Hale Neighbourhood Watch joined with Woodgreen. Sharon Barnett publishes a regular report in the monthly Parish Magazine that gives details of local incidents for our awareness; she also tries to cover a range of topics and useful additional information.

Hale Main Co-ordinator

Sharon Barnett 01725 513335 sharon.barnett@btinternet.com

David Barnett david.barnett442@btinternet.com

Woodgreen Main Co-ordinator

Kevin Hunt 01725 512818 mobile: 07768 765780

Hale Area Co-ordinators

Hatchet Close

Georgina Babey 01725 514480 geebabey@tiscali.co.uk

Hale Purlieu

Doug & Sally Gemmell 01725 513283 dougandsally@btopenworld.com

Lodge Drove

Val le May Neville-Parry 01725 511931 val@lmnp.co.uk

Carters Close, Hatchet Green

Frances Maynard 01725 512275 frances@francesmaynard.com

John Williamson williamsonjohn3@googlemail.com

Tethering Drove, Forest Road West (Oaklands to Pine Lodge)

Jacqui Hartas

Deputy Main Co-ordinator for Hale

01725 510376 jacqui.hartas@gmail.com

If you have any queries or are concerned, worried or suspicious about anything, please don't hesitate to contact either Sharon, Jacqui or Kevin or your local co-ordinator who will always try to help.

With thanks to Sharon, David, Kevin and all the above

“GOOD TO KNOW” Village Information

Policing and Crime

Fordingbridge Police Station closed in 2012 and Fordingbridge Neighbourhood Policing Team moved to Ringwood Police station and covers the area from Martin in the West to Hale in the East and Linford, Ellingham and Blashford in the South. Regular Police Liaison meetings used to be held in Fordingbridge Town Hall and attended by Parish Councillors and our Neighbourhood Watch Co-ordinator. We hope these meetings will resume when refurbishment of Fordingbridge Town Hall is completed. Our current Policing Team is headed by PS Helen Mitchley and comprises PC Tom Neale and PCSO Steve May who is keen to maintain contact with local people and to be invited to attend meetings to discuss local concerns.

Crime in Hale has been increasing but burglaries and violent crimes are rare and most crime is thefts from gardens or outbuildings. Nevertheless they are very distressing for those who fall victim. In 2018/9 there were 42 recorded crimes up from 18 in 2017/18. Cybercrime is also on the increase and Hale Parish Council is keen to encourage parishioners to look out for each other and each other's property and to report anything suspicious to the Police or Neighbourhood Watch.

Social media (eg. Woodgreen Nextdoor) can be very useful in alerting each other to suspicious activity and risk but we must be very careful not to post information that may contravene data protection or privacy laws or impede the Police in their own investigations. Never share full addresses, names, full registration numbers or photographs of individuals on social media. Submit this to the police.

New Forest In Touch is a free mobile app – available for iPhone and Android, downloadable from iTunes and Google Play, that allows speedy reporting of non-urgent Council matters such as dog fouling, fly-tipping, nuisance bonfires, planning breaches etc.



Defibrillator at Hale Village Hall

If you are with someone whom you suspect is having a heart attack, a defibrillator is available outside Hale Village Hall, the porch of Woodfalls Inn and outside Woodgreen Village Shop. There has to be at least one other person present to make use of this. One person must stay with the patient, ideally giving cardiopulmonary resuscitation if there is no pulse; whilst the other fetches the defibrillator. The Emergency Services Operator will tell you the code to open the defibrillator cabinet. There are full instructions for its use on the box and a recorded voice tells you how and when to operate it.

We are grateful to Ian Cook and Hale and Redlynch Transition Group for buying and maintaining Hale's defibrillator.

HOUSING - Historical Information

Date	Population	Males	Females	Households	Av persons per household
1911	115	64	51	27	4.26
1921	171	88	83	34	5.02
1931	240	107	133	70	3.43
1951	489	211	271	153	3.20
1961	572	278	294	190	3.01
1971	484	225	259	190	2.55
1991	535	n/a	n/a	202	2.65
2001	579	n/a	n/a	233	2.48
2011	483	n/a	n/a	262	1.84

The table on the left indicates the changes in the population of Hale during the 20th century. There was considerable housing development between 1921 and 1951 with a 5 fold increase in housing over 30 years. The population now is the same as it was in 1971 albeit with an additional 72 dwellings – with a statistically significant fall in population and household density since the millennium suggesting low occupancy housing is a big issue.

The table below shows householder-reported information on the number of bedrooms in their homes, indicating that over 70% of properties in Hale have three bedrooms or more.

Hale Parish Council welcomes the New Forest National Park Local Plan (adopted August 2019) that permits building of open market housing only in the four designated villages, Ashurst, Brockenhurst, Lymington and Sway. New housing in Hale could only be permitted under rural exception rules for provision of rural affordable housing and one or two-bedroomed properties would be preferred by members of the council.

Number of bedrooms	Percentage
Bedsit	0%
One	1.7%
Two	26%
Three	39.5%
Four or more	32.8%

HOUSING - Affordable Housing

There are a number of families who have lived and worked in the village over many generations. House prices have risen and some younger people cannot afford to stay or return to the village to make their homes here.

An estimate by New Forest District Council of the age demographic of the population in the village of Hale in 2015 (based on 2011 census) is shown below.

Age (years)	0-19	20-29	30-39	40-49	50-59	60-69	70+
Population	70	38	32	58	72	100	113

satisfied the village's requirements for housing for small families and couples. Many of the council houses in Tethering Drove have been bought by tenants under the Right to Buy scheme, thereby removing them from the stock of affordable homes. In the late 1990s a developer built eight houses in Dodgson Close for rent through a Housing Association, on the site of the old glasshouses at Hale Nurseries, adjacent to the boundary with Woodgreen Parish.

Current affordable housing stock in Hale is about 8% of total households but the above-inflation rise in house prices has put much of the private housing stock in Hale out of reach of young families. There is a 22% premium on house prices in National Parks nationally which is even greater in the New Forest. Maximising housing in every community (including National Parks) is government policy and the New Forest National Park Authority local plan targets 800 new homes over the next 16 years.

This indicates that just under 60% of villagers were aged over 50 years.

Council houses were built along Tethering Drove before and after the Second World War and the bungalows in Carters Close were built in the late 1970s.

During the 1960s and 70s, 2-3 bedroom council housing was available for rent in the village that

In March 2017 a simple Parish Plan questionnaire was issued to all residents and the results were collated from a response rate of 48% of households (112). An exhibition and consultation was held in January 2018, gathering more comments there.

Following the 2017 Parish Plan questionnaire, a Hampshire Alliance for Rural Affordable Housing (HARAH) survey was conducted in October 2017 which was responded to by 47% of households. HARAH has been renamed Hampshire Homes Hub. The survey indicated support from Parishioners for an additional small number of affordable homes. Hale Village Community Land Trust was established to explore the potential for building a small number of affordable homes within the village in accordance with planning policy for rural exception sites.

The current and previous Councils agreed in August 2018 and July 2019 that there is a need for an additional small number of houses available at social rents in the parish. Hale Parish Council offered their conditional support in November 2019 for Hale Village Community Land Trust in their application for a grant from New Forest District Council to prepare for a planning application.

The Council will comment on any planning application, as and when presented, on its merits and prefers applications for one and two bedroom properties. It is appreciated that there are a variety of views on the subject of affordable housing and that finding suitable sites is a major challenge.

Following a public meeting held in January 2020 a survey of Hale electors has been undertaken to research public opinion on rural affordable housing and potential site locations in Hale. 48% of electors responded. The results can be seen on the website www.haleparishcouncil.co.uk.

HOUSING - Services

Utilities Supply

The electricity supplied to Hatchet Green and its immediate environs in 1939 has required repeated up-grading to cope with both the number of premises being built and the increasing quantities of power consumed in each property. The first mains water supply was only connected to the school and adjacent properties in 1950 following considerable concern for the health hazards of well water for the school children. Additional larger bore pipes have since been laid from the bore-holes developed by Bournemouth and West Hampshire Water at the southern end of Hale Purlieu.

Today, the whole village has mains water, electricity and telephone services. However only the central area around Hatchet Green and Forest Road between Woodfalls Cross and Tethering Drove have a gas supply and mains drainage. The rest of Hale (roughly half the village) relies on private sewerage or cess pits and electricity, oil, solar panels or heat pumps to provide the energy for central heating and hot water.

Broadband

Hale properties are linked to the Downton telephone exchange. In 2019 Hale was included in the Hampshire Superfast Broadband Programme. Fibre to the Cabinet (FTTC) has been extended to two new cabinets, installed at Forest Road and Carters Close. Fibre to the Premises (FTTP) has been provided to those properties connected to cabinet 11 in Woodgreen and which are too far from

that cabinet to receive the minimum government standard broadband download speed of 24 mbps. These properties include those in Queen Street, Hale Road below the cattle grid and properties at the western edge of Ladies Mile. For properties receiving a service from one of the new cabinets the distance from the cabinets, the age and quality of the telephone cabling to each property and internal wiring will all effect the download speeds achievable.

The Parish Council is interested to know of locations within the village where the service remains poor. 4G broadband is receivable throughout the village but varies depending on the network provider and the specification of each mobile device.

Transport

Hale is on the bus route between Fordingbridge, Woodfalls, Downton and Salisbury, via Salisbury Hospital, with bus stops at Hatchet Green and Woodfalls Cross.

The most convenient railway stations are Salisbury or Southampton Airport Parkway, each about 20 to 30 minutes away by car.

Most homeowners in Hale have more than one car and there are areas of Hale where street parking is a problem because of lack of provision for car parking on driveways or within the curtilage of properties.

Promotion of and support for environmentally friendly initiatives such as cycling, car sharing and use of electric cars are very high on the local and national agenda and ideas for encouraging them in Hale are always welcome. Hale and Redlynch Transition Group is active in this area contact Richard and Paula Downard on 01725 510577.

HALE VILLAGE DESIGN STATEMENT

Hale Parish Council intends to protect, maintain and enhance our village and environment, going forward

Hale Parish is fully within the bounds of the New Forest National Park and has, within the Parish borders, Sites of Special Scientific Interest and Conservation areas.

The Village Design Statement on the next page is informed by the following documents:

The New Forest National Park Authority Local Plan (adopted August 2019)

<https://www.newforestnpa.gov.uk/planning/local-plan/>

The New Forest National Park Authority Planning Guidelines

<https://www.newforestnpa.gov.uk/planning/design-guide/>

Appropriate rules relating to:

Conservation area designation

SSSI protections

Property listings and related rules

National Park regulations

Regulations relating to Areas of Outstanding Natural Beauty.

Hampshire census data.

Villagers share a responsibility to ensure we contribute positively to the protection of the natural environment and the species that depend on it. The Parish Council are considering positive actions to minimise our negative impact on the environment both locally and more widely. A small recycling centre has been installed outside the village hall and twice yearly litter picks are organised. Methods of encouraging good management of dogs are also under discussion.



Originally built as three farm workers' dwellings in the 18th Century, now converted to two semi-detached cottages, this listed property was sympathetically extended to the rear in the 1980s. Care has been taken to preserve the integrity of the original cottage by using a complimentary style and materials that are perfectly in keeping with the charm and character of the original cottage.

HALE VILLAGE DESIGN STATEMENT

Village Planning

Informed by the NFNPA Local Plan and compliant with relevant Planning Legislation. There are three key points outlined in the NFNPA Local Plan - that any proposed building work undertaken within the National Park should, where possible:

- be 'in keeping' with the proposed building's immediate and wider setting.
- maintain the integrity, character and profile of the original building.
- use materials and stylistic designs 'in-keeping' with and appropriate to, the original building and that building's wider setting.

'in-keeping' – appropriate to, the same as or as similar as possible. Keeping the same colours, shapes, materials, overall look as the original building.

'immediate and wider setting' – not just the setting of the building's curtilage but considering the wider street, natural setting and the wider surrounding area.

'integrity and profile' of the building – not changing the shape, roof profile of the building so that the original building shape and footprint remain detectable and maintain the building's visual effect.

'use of appropriate materials' – includes reverting to more original materials even if the building has been less sensitively treated in the past.

'in-keeping stylistic design' – aims to prevent older properties taking on the look of modern 'new-builds' and to maintain a cohesive look with surrounding properties – especially in the case of semi-detached properties or closes of houses built to the same design.

Village Character

The buildings that are listed are already protected by the rules surrounding their listing. Other buildings are part of the character of their immediate surroundings including buildings close by. This means the character of the area around Hatchet Green or Queen Street will be different to that around Hatchet Close or Dodgson Close.

Hale Parish Council would like to ensure, wherever possible, that any changes to properties and any outbuildings within their curtilage, will be appropriate to the building itself and in keeping with the surrounding area and other buildings.

So, for example, requesting to thatch one of the houses in Hatchet Close would not be in keeping with those around it. Nor would building a three-storey extension to one of the thatched cottages around Hatchet Green.

Overall Setting

The look of a property in relation to neighbouring properties and elements such as fencing, hedging, trees and outbuildings. What can be seen from outside the property's curtilage. Replacing or removing existing 'in-keeping' screening such as hedging or sympathetic fencing with panel fencing or hedging toxic to livestock is unlikely to be approved.

The Environment

Includes the management, maintenance and enhancement of the natural environment in and around the village. Working closely with local landowners, the National Trust and Natural England; also with Hale Parish Council regarding the land under our jurisdiction, including Hatchet Green, the car park, the cemetery and the track to the right of the village hall. The Council also works with Hampshire Highways, New Forest District Council and Hampshire County Council and other appropriate bodies, to preserve our village verges and the trees throughout the Parish. Of major concern is liaison with National Trust and Hampshire Highways to maintain the gravel verge adjacent to the road along Hale Purlieu (locally known as Lady's Mile).

TRAFFIC AND ROADS

There are four roads that enter Hale – Forest Road between Telegraph Hill and Woodfalls, Hale Road from Woodfalls Cross, Hale Lane from Woodgreen and Hale Purlieu from the top of Woodgreen. All are subject to speeding vehicles to varying degrees but the problem is most acute on Forest Road as it is a main thoroughfare and has a relatively high volume of traffic. There are also significant traffic and parking issues around Hatchet Green.

Most roads in Hale do not have pedestrian footpaths. Potholes from worn or damaged substructure can be an issue particularly after heavy rain. The road verges are grassed areas adjacent to the road which provide grazing for ponies and cattle. They are therefore of interest to the Verderers and the Parish Council is obliged to preserve them. Parking and passing of vehicles on the verges can cause severe problems, particularly in wet weather.

It is planned to consult the Verderers, National Park Authority, Natural England and Hampshire Highways to see if a solution can be found.

Traffic calming measures have been proposed – most relevant to Forest Road but also affecting the other roads leading to the village. A “Speed Watch” group has been looked into and volunteers have come forward. This requires coordinating and the use of speed radar with offenders having their car registration recorded and persistent offenders being referred to Hampshire Police. It is not however an organisation which can issue its own penalty notices or indeed influence what action the Police might take. A further measure which has been proposed is to rework the traffic permissions around the

traffic island at Woodfalls Cross (pictured below). Proposals to refashion this area in the interests of safety have been made and funding has been partially achieved.

Walking, hiking and responsible cycling and horse-riding are all encouraged and we are keen to improve the condition of our roads and verges and keep our footpaths and bridleways open to promote these activities, working together with the various bodies and organisations that oversee them. The Western Escarpment Conservation Area group meets regularly to focus on protection of the environment and verges are a key focus so the Council will continue to work with them for ideas and joint proposals.



COMMONERS AND COMMONING

Commoners of the New Forest are those who occupy land or property to which attaches one or more rights over the Forest. These rights are common of pasture, pasture for sheep, mast and fuelwood. Rights are attached to property and not an individual; they have existed since time immemorial, undoubtedly predating the creation of the "New Forest" by King William I in 1079.

The most important of these rights today is that of pasture whereby commonable animals are allowed on the Forest. Ponies, cattle, donkeys and mules are commonable animals. Only a few properties have the right to turn out sheep on the Forest. Mast is the right to turn out pigs in the autumn to feed upon the acorns, known as pannage. This not only provides food for the pigs but helps other animals - eaten in excess acorns are poisonous to the ponies and cattle. Fuelwood is the free supply of a stipulated amount of wood to certain Forest properties. Many of these wood rights have been bought up by Forestry England and their predecessors as the supply causes them some inconvenience.

Those who wish to exercise the right of common of pasture may do so on application to the Verderers' Clerk who will be able to confirm the existence of the right and allocate a brand for the animals to assist identification. Once they have been branded, the animals may be turned out upon payment of a marking fee to the local Agister. Many that exercise such rights are descendants of families who have been Commoners for generations. Commoning today does not provide a living, it is only economic as part of a system of farming.

Commoning does however provide part of the service of managing the Forest. The ponies have been called the 'Architects' of the Forest, for it is through their browsing and grazing that the lawns and trees look as they do today. Without their 'work' and that of the cattle and deer the Forest would soon be overgrown with brambles, gorse and other coarse herbage. Without commoning, the Forest's value for recreation and ecology, as one of the major lowland pasture woodlands in Europe would not exist.

The Commoners are managed by the Verderers through the Verderers Court; day to day management is carried out by the Agisters. Agisters are employees of the Verderers of the New Forest and they are often Commoners themselves, because they must have an intimate knowledge of the area and the workings of the Forest. The name is medieval in origin. The work is rough and conditions are tough. Working hours can be long and Agisters must provide round the clock coverage in the event of an emergency.



COMMONERS AND COMMONING

Many of the ponies, cattle and donkeys live in the Forest all year round, grazing the Forest lawns in summer and browsing on gorse, holly and heather in winter. The ponies grow thick coats in winter to protect themselves against the cold. Stallions, which currently run on the Forest between about 14th May and 18th June each year, are all approved by the Verderers to ensure, as far as possible, that ponies bred on the Forest are of a suitable type: sturdy and able to thrive, whilst at the same time producing good strong foals. Only a limited number of registered New Forest stallions are allowed, and foals are mostly born during the spring and summer months. During the late summer and early autumn the agisters hold annual drifts when the ponies are checked over, branded when necessary, tail hair cut to indicate marking fees paid and, if the owners have requested, wormed and fitted with reflective collars.



© www.newforest-life.com



© www.newforest-life.com



© www.newforest-life.com

ANIMAL ACCIDENTS

Despite speed limits, on average every other day, an animal will be killed or injured on the Forest roads. Sadly, one of the most common Agister jobs in recent times is attending road traffic accidents. It is often the Agister's unpleasant duty to put the animal out of its suffering. Ponies, cows, donkeys and deer have less road sense than most 2-year-old children and should not be expected to move out of the way of traffic. In the event of an accident the Agisters can be contacted at any time of the day or night through the police emergency service by dialling 999.

You are legally obliged to report any accident of any sort within 24 hours of the event – this includes any accident involving a Forest animal.

**Contact the Police: 999 (emergency)
0845 045 4545 (non-emergency)**

for any road traffic accident involving a pony, cow, donkey, pig, sheep, dog or deer

The Verderers' Office: 023 8028 2052 (Mon-Fri 9am-5pm)
for sick, injured or distressed pony, cow, donkey, pig or sheep

Forestry England: 023 8028 3141 (24 hours)
for sick, injured or distressed pony, cow, donkey, pig, sheep or deer

BUSINESSES IN HALE CONTACT WITH PARISHES

There are a number of small businesses and sole traders providing goods and services in Hale including meat and poultry suppliers, a charcoal business, music production, a chocolatier, jewellery-maker, wine merchant, hairdresser, gardeners and a tree-surgeon, an artist, a photographer and health and wellbeing professionals.

Hale Parish Council believes businesses should be supported, encouraged and sustained to keep the community thriving and welcomes ideas for ways we can help.



Hale Parish Council is in regular contact with local Parish Councils including Redlynch, Downton and Woodgreen and extending as far as Martin and Whitsbury. Discussions centre around regional issues that affect all of the parishes around Hale, for example the current provision of rural affordable housing and the recent National Grid Visual Impact Project. We also regularly discuss ongoing common local issues such as planning, parking, camping and protection of verges.

There are also many organisations in Hale that work with close neighbours such as Woodgreen, Redlynch, Breamore or Godshill. These include:

St Mary's Hale church which is part of the wider Avon Valley Benefice group of seven churches in Fordingbridge, Sandleheath, Godshill, Hyde, Breamore and Woodgreen as well as Hale www.avp-benefice.org.uk

Hale Primary School is part of the Forest Edge Learning Partnership with Breamore and Hyde Primary Schools. For Hale contact the school office on 01725 510436 or Mrs Judy Bennett for Breamore on 01725 512286

Hale & Woodgreen Horticultural Society - David Mussell 01725 514592

Hale & Woodgreen Neighbourhood Watch - Sharon Barnett 01725 513335

Hale & Woodgreen Community & Parish Magazine
haleandwoodgreen@aim.com or haleandwoodgreen@aol.com

Hale & Redlynch Transition Group - Richard Downard 01725 510577

Redlynch & Hale Cricket Club - <https://rhcc.play-cricket.com>

Woodgreen Community Shop - www.woodgreenshop.org

ACTION PLAN

Part One - Projects with Target Dates

ACTION/PROJECT	RESPONSIBILITY	TIMESCALE
Achieve the NALC Local Council Quality Award	Parish Clerk to pass ILCA (intro to CiLCA) Parish Clerk to pass CiLCA qualification – to start July 2020 Chair and Deputy Chair to lead on next 3 actions* towards award	Passed March 2020 By mid 2021 By mid 2022
Produce and Publish an Annual Report*	Parish Clerk, Chairman and Deputy Chairman Publish Annual Report for the Annual Parish Assembly and website. Display printed copies at APA, in village hall and other suitable venues	By March 2021 and then annually in March/April
Review Parish Council Policies and Procedures, Update as Necessary and Review Annually*	Clerk and Chairman to review existing policies etc for approval by Councillors Add a reserves policy (Cllr Lavis) Add training & development policies for Clerk (CPD 12 pts pa) and Councillors Add a community engagement policy Vice Chairman or Cllr Lavis to check bank reconciliations quarterly	By September 2021 Added July 2020 By March 2021 By September 2021 March/June/Sept/Dec Review all policies annually
Review Clerk Appraisal Process and Record Training*	Cllrs Hartas, Delves and Gemmell (Personnel & Standards Sub Committee) Review PDR process Conduct 6 monthly PDR meetings with Clerk and summarise to Council Parish Clerk to attend Cemetery Management Course Keep training records for Clerk and Councillors (Clerk)	Completed August 2020 September / March annually By March 2021 Ongoing
Cemetery Improvements: Weeding, path management, plant a central bed and wild flower section	Cllr Mangan (Lead Councillor) and Volunteers Paths re-gravelled and centre bed re-planted Wild flower section to be completed Oversight of planting and annual maintenance – report to Council	Meetings Feb and Sept Completed Mid 2019 Mid 2021 Annually and as required

ACTION PLAN

Part One - Projects with Target Dates

ACTION/PROJECT	RESPONSIBILITY	TIMESCALE
Hatchet Green Traffic and Parking Improvements: Orderly use of car park and restriction of parking on verges	Councillor Harrison (Lead Councillor) Stage 1 – liaise with school and distribute leaflets If no improvement by March 2021 Stage 2 – develop draft proposals, to achieve the desired improvements, in consultation with Hampshire Highways, Natural England, NFNPA, NFDC	Ongoing monitoring Walking bus is established from Redlynch Club Begin March 2021 if no improvement after Stage 1
Hale Purlieu Verge Improvements and Tethering Drove Verge and Drainage Improvements	Cllr Harrison and Cllr Gemmell (Lead Councillors) Develop draft proposals, to achieve the desired improvements, in consultation with Hampshire Highways, The National Trust, NFNPA , NFDC	By September 2021
Road Safety and Traffic Management: Speed Watch Group Safety at Woodfalls Cross and Forest Road	Councillor Harrison (Lead Councillor) and Volunteers Fordingbridge Neighbourhood Policing Team Neighbourhood Watch Establish Hale Speed Watch Group Subject to funding, implement HCC Traffic and Safety recommendations for changes to signage and markings. Councillor Hartas to seek funding	By June 2021 By October 2020
Replacement and Maintenance of Seats and Benches:	Cllrs Mangan and Hartas (Lead Councillors) – Lengthsman Replacement of two seats next to Hatchet Green Lengthsman annual treatment and/or repair following risk assessments	Completed 2020 As needed
Online Communication: New website Social media presence Information update Email	Parish Clerk and David Keniston New website design and development Councillors decided against Facebook page for time being Via website blog – encourage sign-up by Parishioners Standardise Councillor email addresses	Website live January 2020 Review Spring 2021 Ongoing By December 2020

ACTION PLAN

Part One - Projects with Target Dates

ACTION/PROJECT	RESPONSIBILITY	TIMESCALE
Website accessibility	Parish Clerk with the help of Councillors and Devid Keniston Evaluate website for accessiblity compliance Plan remedial work as necessary and set timescales	Completed August 2020 By December 2020
Affordable Housing Provision: Community consultation and information session	Cllr Hartas (Lead Councillor) Hale Parish Council New Forest District Council Rural Housing Enabler New Forest NPA Hale Village Community Land Trust (HVCLT)	Public meeting held Jan 2020 Survey completed Sept 2020
Affordable Housing Provision: Investigation of and support for suitable site(s)	Cllr Hartas (Lead Councillor) Hale Parish Council New Forest District Council Rural Housing Enabler New Forest NPA Hale Village CLT	Village survey to be completed by September 2020 Survey results displayed on website 24/8/20
Environmental Awareness Renewable Energy Recycling	Cllr Delves and Hartas (Lead Councillors) Hale Parish Council Hale Village Hall Committee Hale and Redlynch Transition Group	Exhibition February 2021 Recycling centre now open outside village hall
Village Events: Celebrating major events as a village or in collaboration with neighbouring villages	Cllr Lavis or Cllr Hartas (Lead Councillors) Hale Parish Council Hale Social Committee Hale Village Hall Committee Hale Park	9 th May 2020 cancelled and will be rescheduled for autumn 2020 or spring 2021

ACTION PLAN

Part Two - Ongoing Projects

ACTION/PROJECT	RESPONSIBILITY	TIMESCALE
Maintain Good Practice in Planning: Preserve and enhance the character of the village	Cllrs Mangan, Harrison and Lavis (Lead Councillors) Acknowledge the NFNPA Local Plan, published 2019 and use to inform review of planning applications received and make recommendations to Council	Ongoing
Annual Risk Assessments	Financial – Clerk and Cllr Mangan or Cllr Lavis Cemetery and notice board – Cllr Mangan and Clerk Hatchet Green, seats, dragon’s teeth, car park, notice board – Cllrs Lavis/Gemmell Woodfalls Cross, bus stop, seat, notice board – Cllrs Harrison/Delves Seats, Hale Purlieu - Cllr Hartas Lady’s Mile - Cllr Gemmell	Annually in July and August
Cemetery Management: Managing records, bookings and finances. Grass and hedge cutting. Marking of graves	Parish Clerk Councillors help with marking of graves Cutting Edge monthly grass cut in summer, hedge cutting in autumn	Ongoing
Car Park Management: Leaf clearance, pothole filling, dragons’ teeth replacement	Cllr Lavis (Lead Councillor) Council inspection / risk assessment annually Volunteers / lengthsman - leaf clearance annually Lengthsman / volunteers pothole filling annually Lengthsman dragon’s teeth repair or replacement	July / August December / January March As needed
Working Parties: Litter picking, ragwort and seedling clearance, hedge and bramble management	Cllr Mangan (Lead Councillor) - Councillors and National Trust volunteers HPC/NT/Lengthsman ragwort and seedling clearance once yearly Lengthsman / volunteers hedge and bramble management	March and September August As needed

ACTION PLAN

Part Two - Ongoing Projects

ACTION/PROJECT	RESPONSIBILITY	TIMESCALE
Hatchet Green Regeneration and Verge Protection Project: To be managed in conjunction with Part One Traffic and Parking Improvements	Cllr Harrison (Lead Councillor) HPC, WECA, Verderers, Natural England Lengthsman Installation of new dragon's teeth and passing places on north side of green Ongoing monitoring and repair of dragon's teeth Cutting back of hedges on north side of green	Completed 2018 Ongoing as needed Ongoing as needed
Tree Management and Safety	Hale Tree Warden - ongoing Hale Parish Council – regular employment of tree surgeon to maintain safe condition. Oak tree by Hale Village Hall limb removed March 2020. NFDC Tree Team – survey carried out Q3 2019 next one Q3 2022	Monthly reports to HPC Tree work undertaken as needed Next survey September 2022
Crime Management: Communication of safety advice	Cllr Delves and Cllr Harrison (Lead Councillors) Hale Parish Council Fordingbridge Neighbourhood Policing Team Neighbourhood Watch	Ongoing
Recording and Management of Village Archives	Cllr Hartas (Lead Councillor) Georgina Babey and Peter Roberts supported by Hale Parish Council and Hale Village Hall Committee. Kept in Hale Village Hall	Ongoing
Display and Public Access to Village Archives	Cllr Hartas (Lead Councillor) Hale Parish Council and Hale Village Hall Committee, Georgina Babey and Peter Roberts	Yearly from October 2020
Library Replacement: Loan of books and DVDs	Cllr Hartas and Cllr Mangan (Lead Councillors) Hale Village Hall Committee and Volunteers	Open weekly from October 2020
Education and Management of Nuisance e.g. fireworks, bonfires, low flying aircraft, dog fouling	Parish Clerk Website blog, Parish Magazine	Ongoing

ACTION PLAN

Part Two - Ongoing Projects

ACTION/PROJECT	RESPONSIBILITY	TIMESCALE
Affordable Housing Provision: Support for suitable provider(s)	Cllr Hartas (Lead Councillor) Hale Parish Council New Forest District Council Rural Housing Enabler New Forest NPA Hampshire Home Hub Hale Village Community Land Trust	Maintain ongoing communication Meet HVCLT quarterly
Maintaining a Local Presence: Attending meetings e.g. Western Escarpment Conservation Area, North West Quadrant, New Forest Consultative Panel	Councillors attend on a delegated or availability basis Western Escarpment – Cllr Gemmell or Cllr Lavis North West Quadrant – Cllr Hartas or Cllr Gemmell New Forest Consultative – All Councillors in rotation Police Liaison Meetings – Cllr Delves and Harrison	Ongoing
Wellbeing Initiatives: e.g. Hale & Woodgreen Support Group, Friends' Cafe, Community Teas, outings, pilates, aerobics, keep fit, Tai-chi/Qi Gong, table tennis, library	Cllr Hartas and Cllr Mangan (Lead Councillors) HWSG, Village Hall Committee, Social Committee and Activity Leaders	Ongoing

HALE - an aerial photograph taken at sunset



ACKNOWLEDGEMENTS

We greatly appreciate the hard work and commitment of Sloan Hickman, Gaby Lucas, Georgina Babey and Susan Witt in researching and compiling this document, alongside members of the Parish Council, on behalf of the parishioners of Hale.

Please also see the separate Historical and Geological profile of Hale on www.haleparishcouncil.co.uk.



Date of Publication 20th October 2020

HALE PARISH COUNCIL
Amberwood
Highfield Lane
Woodfalls
SP5 2NG